

# Dexion Strata 2 Sliding Door Cabinet



## Product overview

The Strata 2 Sliding Door Cabinet is the latest sleek addition to the Dexion Cabinet range. Designed with office refurbishments and fit outs in mind, this cabinet is effortlessly incorporated into workstation areas or smaller office areas where space optimisation is essential.

The cabinet's sliding doors are perfectly suited to aisles because they do not impede walkways. They are uniquely designed to ensure a smooth, quiet sliding door operation, while the bevelled handle is ergonomic and easy to use. The Strata 2 Sliding Door Cabinet is GECA Certified and has perforated doors with acoustic sound absorption panels as standard. The perforated design creates a modern aesthetic, whilst acoustic panels enhance sound absorption. The Strata 2 Sliding Door Cabinet is available in a range of colours.

## Key features and benefits

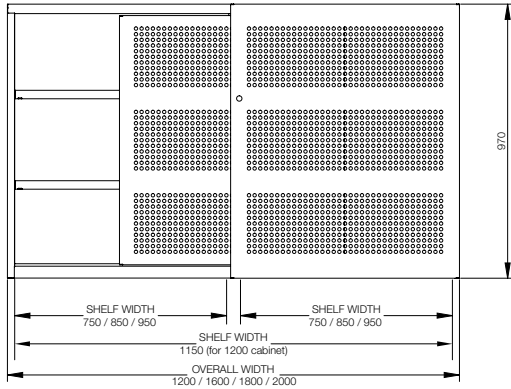
- Ergonomic bevelled handle which is easy to use.
- Complimentary matching planter box range.
- Achieve maximum storage capacity across a range of cabinet sizes incorporating fully adjustable shelves.
- Standard interior colour of Stone White to match other Dexion products for ease of interchangeability and/or supply of accessories.
- Secure 3000 locking system including master key availability provides ultimate peace of mind.
- Removable barrel folding key with antimicrobial properties for durability, pocket comfort and hygiene.
- Levelling feet as standard and adjustable from the base inside the unit.
- Acoustic sound absorption panel as standard.
- Wide variety of accessories available and interchangeable across Dexion products.

## Accessories

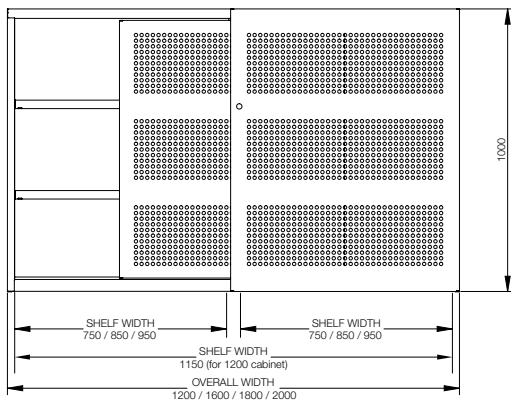
- Shelf – slotted
- Divider – slotted shelf
- Hanging file chassis
- Roll out – reference shelf
- Shelf – plain
- Divider – wrap around
- Coat rail
- Bins – on shelf
- Shelf – fineline
- Filing rack – suspended
- Roll out – file frame
- Divider – binning
- Filing rack – wrap around
- Roll out – media drawer

# Dexion Strata 2 Sliding Door Cabinet

## Technical specifications



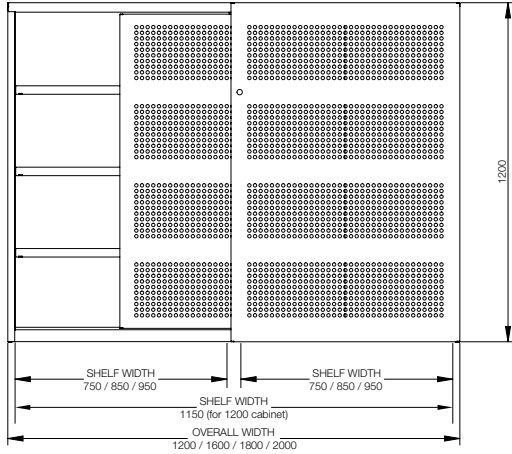
3 Tier Sliding Door 970 H				
Overall Height	Overall Width	Overall Depth	External Colour	Code
970mm	1200mm	480mm	SG	177760SG
970mm	1200mm	480mm	WS	177760WS
970mm	1600mm	480mm	SG	177750SG
970mm	1600mm	480mm	WS	177750WS
970mm	1800mm	480mm	SG	177753SG
970mm	1800mm	480mm	WS	177753WS
970mm	2000mm	480mm	SG	177756SG
970mm	2000mm	480mm	WS	177756WS



3 Tier Sliding Door 1000 H				
Overall Height	Overall Width	Overall Depth	External Colour	Code
1000mm	1200mm	480mm	SG	177761SG
1000mm	1200mm	480mm	WS	177761WS
1000mm	1600mm	480mm	SG	177751SG
1000mm	1600mm	480mm	WS	177751WS
1000mm	1800mm	480mm	SG	177754SG
1000mm	1800mm	480mm	WS	177754WS
1000mm	2000mm	480mm	SG	177757SG
1000mm	2000mm	480mm	WS	177757WS

# Dexion Strata 2 Sliding Door Cabinet

## Technical specifications



4 Tier Sliding Door 1200 H				
Overall Height	Overall Width	Overall Depth	External Colour	Code
1200mm	1200mm	480mm	SG	177762SG
1200mm	1200mm	480mm	WS	177762WS
1200mm	1600mm	480mm	SG	177752SG
1200mm	1600mm	480mm	WS	177752WS
1200mm	1800mm	480mm	SG	177755SG
1200mm	1800mm	480mm	WS	177755WS
1200mm	2000mm	480mm	SG	177758SG
1200mm	2000mm	480mm	WS	177758WS

# Dexion Strata 2 Sliding Door Cabinet

Accessory Type	Height	Width	Depth	Capacity (UDL)	Colour	Code
FineLine Shelf	16mm	750mm	400mm	45KG	SW	160851
FineLine Shelf	16mm	850mm	400mm	45KG	SW	177940
FineLine Shelf	16mm	950mm	400mm	45KG	SW	177941
FineLine Shelf	16mm	1150mm	400mm	45KG	SW	177943
Plain Shelf	30mm	750mm	400mm	130KG	SW	201009
Plain Shelf	30mm	850mm	400mm	130KG	SW	177910
Plain Shelf	30mm	950mm	400mm	80KG	SW	177911
Plain Shelf	30mm	1150mm	400mm	80KG	SW	177913
Slotted Shelf	30mm	750mm	400mm	130KG	SW	201011
Slotted Shelf	30mm	850mm	400mm	130KG	SW	177914
Slotted Shelf	30mm	950mm	400mm	80KG	SW	177915
Slotted Shelf	30mm	1150mm	400mm	80KG UDL	SW	177917
Shelf Clip	-	-	-	-	Zinc	ERL624

Note: Shelves and shelf clips sold separately to cabinets. Shelves available in Stone White or to match cabinet colour. 1200mm wide Sliding Door cabinets will not accept roll out accessories.

Key: - UDL: Uniformly distributed load, SW: Stone white, S: stocked, MTO: Made to order.

## Made to Order

Over and above our standard stocked colour range, we offer a contemporary range of colours for you to choose from.

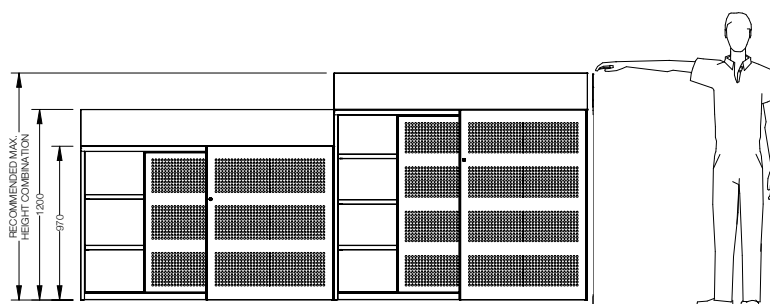
- BT – Black Texture
- GR – Graphite Ripple
- WS – White Satin
- WT – White Texture
- WG – White Gloss Ripple
- PW – Pearl White Gloss
- WO – Wild Oats
- PS – Palladium Silver Pearl
- BZ – Blaze Blue Gloss
- RE – Red Gloss
- XO – Orange Gloss
- LY – Lemon Yellow Gloss

Alternatively cabinets are available in all standard Dulux and interpon powdercoat colours. Please speak with your sales consultant for more information.

## Planter integration

Dexion Strata 2 Planter boxes are designed specifically for integration with the Strata 2 cabinet range. Planter boxes and cabinets are designed to align with standard heights in the cabinet range producing clean, consistent lines.

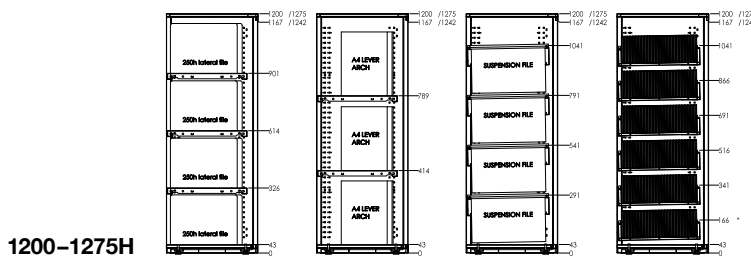
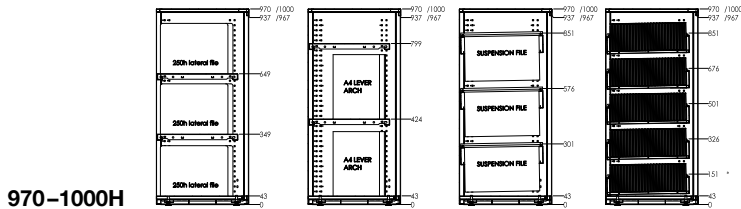
Please note: the recommended maximum height combination should not exceed 1430mm. The maximum height is achieved by using a 1200mm high cabinet with a standard 230mm planter box. Planter boxes accept 200mm diameter pots.



# Dexion Strata 2 Sliding Door Cabinet

## Storage capacity

Below are diagrams showing the achievable number of storage levels for the four most typical storage applications used for Sliding door cabinets: A4 Lever Arch folders (315H or less), hanging files, lateral files & CDs



## Contact

For more information on the Dexion Strata 2 Sliding Door Cabinet, please contact us on 1800 100 050.

### Disclaimer:

The Information contained herein is the intellectual property of Dexion. The Information is defined to include: data, text, images, specification, graphics, design details and any and all other information whatsoever contained herein. The Information has been produced exclusively for Dexion and may not be used for any other purpose. None of the information may be used, altered, edited, copied, distributed or duplicated in any way without the express written consent of Dexion. Whilst the utmost care is taken to ensure the accuracy of the information contained herein, Dexion makes no guarantee as to its accuracy. Dexion shall, under no circumstances, be liable for any costs, losses, expenses or damages which may in any way be attributable to the use or adoption of such data and/or design details. All dimensions indicated are nominal only. Dexion reserves the right to alter or amend any of the information herein, including data and design details, without prior notice.