

Strata 2 Swing Door Cabinet



Introduction

Imagine a dual purpose storage solution designed to accommodate your changing storage requirements. The Strata 2 Swing Door Cabinet offers the ultimate combination in functionality and value. Through a diverse range of heights and with matching depths to the balance of the Dexion cabinet range, this new cabinet compliments the existing range perfectly.

The Strata 2 Swing Door Cabinet is equipped with reinforced door panels, concealed hinges and an enclosed door frame design for added strength and security. Features include a full height recessed handle providing a functional grip, whilst maintaining a modern, simple aesthetic.

Flexibility is assured as the Swing Door Cabinet can be easily converted to a Tambour Door or Bookcase Cabinet.

Features

- Achieve maximum storage capacity across a range of cabinet sizes incorporating fully adjustable shelves
- Durable powder coat finish with options such as texture and satin
- Made from 100% recyclable sheet steel under ISO14001 EMS certification
- Levelling feet as standard and adjustable from the base inside the unit
- Optional lockable heavy duty castors (height restrictions may apply)
- Wide variety of accessories which are interchangeable across Dexion products
- Full height recessed ergonomic handles for ease of operation
- Secure 3000 series locking system. Removable barrel folding key with antimicrobial properties for durability, pocket comfort and hygiene
- GECA Certification
- Complimentary matching planter box range
- Shelves available in Stone White or to match cabinet finish

Other

Accessories

- Shelf – slotted
- Shelf – plain
- Shelf – fineline
- Divider – binning
- Divider – slotted shelf
- Divider – wrap around
- Filing rack – suspended
- Filing rack – wrap around
- Hanging file chassis
- Coat rail
- Roll out – file frame
- Roll out – media drawer
- Roll out – reference shelf
- Bins – on shelf

Strata 2 Swing Door Cabinet



Technical specifications

2 Tier Swing Door 670 H	Overall Height	Overall Width	Overall Depth	External Colour	Code	S/MTO
	670mm	900mm	460mm	SG	177735SG	S
	670mm	900mm	460mm	WS	177735WS	S

3 Tier Swing Door 970 H	Overall Height	Overall Width	Overall Depth	External Colour	Code	S/MTO
	970mm	900mm	460mm	SG	177736SG	S
	970mm	900mm	460mm	WS	177736WS	S

3 Tier Swing Door 1000 H	Overall Height	Overall Width	Overall Depth	External Colour	Code	S/MTO
	1000mm	900mm	460mm	SG	177737SG	S
	1000mm	900mm	460mm	WS	177737WS	S

Note: – Shelves available in Stone White or to match cabinet colour.
 – Matching internal and external cabinet.
 – Shelves and shelf clips sold separately.
 Key: – SG: Silver Grey, WS: White Satin, S: Stocked, MTO: Made To Order.

Strata 2 Swing Door Cabinet



Technical specifications

4 Tier Swing Door 1200 H	Overall Height	Overall Width	Overall Depth	External Colour	Code	S/MTO
	1200mm	900mm	460mm	SG	177738SG	S
	1200mm	900mm	460mm	WS	177738WS	S

4 Tier Swing Door 1275 H	Overall Height	Overall Width	Overall Depth	External Colour	Code	S/MTO
	1275mm	900mm	460mm	SG	177739SG	MTO
	1275mm	900mm	460mm	WS	177739WS	MTO

Note: - Shelves available in Stone White or to match cabinet colour.
 - Matching internal and external cabinet.
 - Shelves and shelf clips sold separately.
 Key: - SG: Silver Grey, WS: White Satin, S: Stocked, MTO: Made To Order.

Strata 2 Swing Door Cabinet



Technical specifications

5 Tier Swing Door 1650 H	Overall Height	Overall Width	Overall Depth	External Colour	Code	S/MTO
	1650mm	900mm	460mm	SG	177740SG	MTO
	1650mm	900mm	460mm	WS	177740WS	MTO

6 Tier Swing Door 1980 H	Overall Height	Overall Width	Overall Depth	External Colour	Code	S/MTO
	1980mm	900mm	460mm	SG	177741SG	S
	1980mm	900mm	460mm	WS	177741WS	S

Note: – Shelves available in Stone White or to match cabinet colour.
 – Matching internal and external cabinet.
 – Shelves and shelf clips sold separately.
 Key: – SG: Silver Grey, WS: White Satin, S: Stocked, MTO: Made To Order.

Strata 2 Swing Door Cabinet



Technical specifications

2 Tier Swing Door with Castors 750 H		Overall Height	Overall Width	Overall Depth	External Colour	Code	S/MTO
		750mm	900mm	460mm	SG	177742SG	S
		750mm	900mm	460mm	WS	177742WS	S

3 Tier Swing Door with Castors 1050 H		Overall Height	Overall Width	Overall Depth	External Colour	Code	S/MTO
		1050mm	900mm	460mm	SG	177743SG	S
		1050mm	900mm	460mm	WS	177743WS	S

3 Tier Swing Door with Castors 1080 H		Overall Height	Overall Width	Overall Depth	External Colour	Code	S/MTO
		1080mm	900mm	460mm	SG	177744SG	S
		1080mm	900mm	460mm	WS	177744WS	S

Note: - Shelves available in Stone White or to match cabinet colour.
 - Matching internal and external cabinet.
 - Shelves and shelf clips sold separately.
 Key: - SG: Silver Grey, WS: White Satin, S: Stocked, MTO: Made To Order.

Strata 2 Swing Door Cabinet



Accessory Type	Height	Width	Depth	Capacity (UDL)	Colour	Code	S/MTO
Fineline Shelf	16mm	850mm	400mm	45KG	SW	177940	MTO
Plain Shelf	30mm	850mm	400mm	45KG	SW	177910	S
Slotted Shelf	30mm	850mm	400mm	45KG	SW	177914	S
Shelf Clip	-	-	-	-	Zinc	ERL624	S

Note: - Shelves and shelf clips sold separately to cabinets. Shelves available in Stone White or to match cabinet colour.

Key: - UDL: Uniformly Distributed Load, SW: Stone White, S: Stocked, MTO: Made To Order.

Made to Order – Non Standard Colours

Over and above our standard stocked colour range, we offer a contemporary range of colours for you to choose from.

- BT – Black Texture
- GR – Graphite Ripple
- WS – White Satin
- WT – White Texture
- WG – White Gloss Ripple
- PW – Pearl White Gloss
- WO – Wild Oats
- PS – Palladium Silver Pearl
- BZ – Blaze Blue Gloss
- RE – Red Gloss
- XO – Orange Gloss
- LY – Lemon Yellow Gloss

Alternatively cabinets are available in all standard Dulux and Interpon powdercoat colours. Please speak with your sales consultant for more information.

Planter integration

Strata 2 Planter boxes are designed specifically for integration with the Strata 2 cabinet range. Planter boxes and cabinets are designed to align with standard heights in the cabinet range producing clean, consistent lines.

Please note: the recommended maximum height combination should not exceed 1430mm. The maximum height is achieved by using a 1200mm high cabinet with a standard 230mm planter box. Planter boxes accept 200mm diameter pots.



Strata 2 Swing Door Cabinet

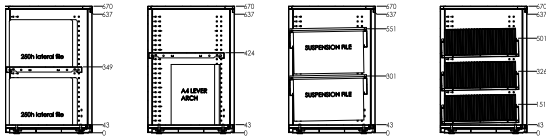


Storage capacity

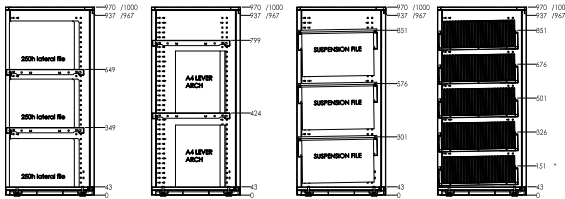
Below are diagrams showing the achievable number of storage levels for the four most typical storage applications used for Swing door cabinets:

- A4 Lever Arch folders (315H or less), hanging files, lateral files & CDs

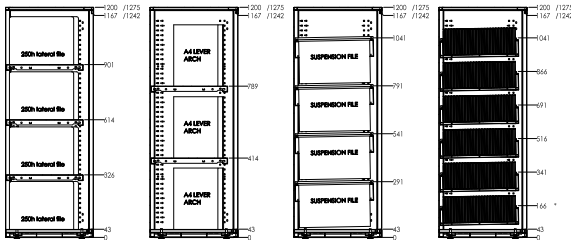
670H



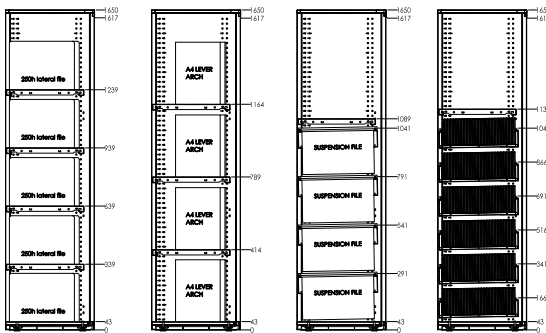
970-1000H



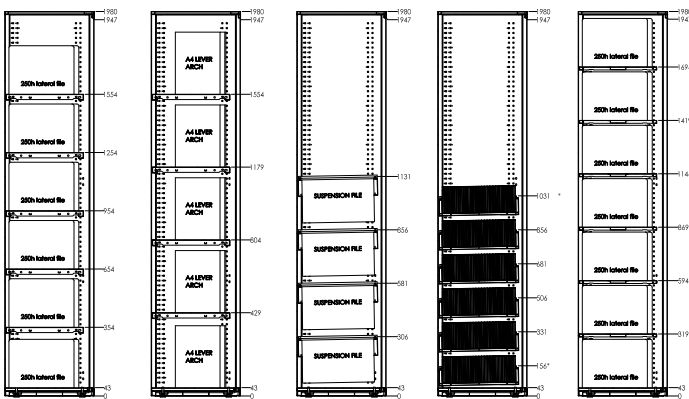
1200-1275H



1650H



1980H



Lateral filing on shelves

A4 Lever Arch filing on shelves

Suspension filing in file frames

Media storage in media drawers

Lateral filing on fineline shelves

Dexion® Compactus® Ultima® Freetrack® Speedlock® Keylock® Selecta-Flo® Marlbro® Spandex® Plan-D® Easyfit® Precision® Smartstore® Kurve® Mysite®, and Adapt® are all registered trademarks. OCT2013 DCOM0192