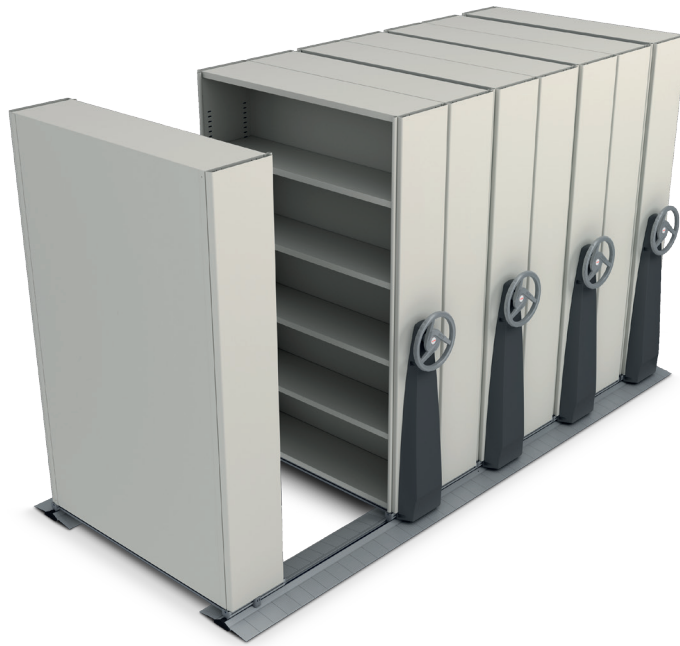


Dexion Mekdrive 2 Compactus[®]



Product overview

Dexion's Mekdrive 2 Compactus[®] revolutionises filing and storage systems with advanced technology and design. It is the lightest mechanically assisted mobile storage system available; this keeps floor loads to a minimum, a major consideration in high rise buildings. It's unique belt driven technology and ergonomically designed hand wheel moves 4,000kg block loads effortlessly, eliminating operator strain.

The Mekdrive 2 Compactus[®] provides incredible value when compared with traditional mechanically operated fixed-track systems as it does not require floor fixing or timber infills, eliminating damage to floor coverings. You can easily upgrade an existing Dexion Freetrack system to the Mekdrive 2 Compactus[®].

Key features and benefits

- The low profile track design provides great strength and enhanced mobility for the Mekdrive 2 Compactus[®] runners.
- The clip-on track ramps further reduce trip hazards and allows for the movement of trolleys/wheelchairs between the shelving bays.
- Multiple track configurations apply better distribution of floor loads.
- The Mekdrive 2 Compactus[®] needs no fixing into the floor, eliminating any permanent damage to floors and flooring material and allowing for cost effective relocation/reconfiguration of the systems, as needs arise.
- The unique track anti-tilt mechanism, secures all shelving, further enhancing operator safety.
- Users of the Dexion Freetrack system can easily upgrade from their existing unit to the Mekdrive 2 Compactus[®].
- Variety of locking options available, providing additional security to stored documents.

Technical specifications

Drive type	Mechanically assisted
Shelving and accessory system	Ultima CI-80
Maximum system width	2700mm
Shelving width (bay width)	750mm 900mm 1200mm
Shelving depth	300mm 400mm 450mm 600mm
Shelving height	1875mm 2175mm 2400mm
Overall system height	1940mm 2240mm 2465mm
Maximum bay carrying capacity*	500kg
Maximum movable block load*	4000kg
Security	Tracks/aisle lock
Standard colour	Stone white
Other colours	Refer to colour selector

*Uniformly distributed load. Shelf, beam and bay capacities vary, contact your representative for specific maximum loads based on your configuration.

Dexion Mekdrive 2 Compactus®

Shelf loads

Ultima CI-80 standard unbraced shelves have the following maximum load rating. These ratings are based on an uniformly distributed load.

Shelf width (mm)	Shelf depth (mm)					
	250	300	400	450	500	600
750	130kg	130kg	115kg	115kg	115kg	115kg
900	130kg	130kg	115kg	115kg	115kg	115kg
1200	80kg	80kg	80kg	80kg	100kg	100kg

*These load ratings can be increased by adding our shelf stiffeners. Achieve up to 240kg shelf loads.

If the shelving is being used for paper filing the figures below may be used as a guide to the actual load of the contents.

Shelf width (mm)	Average weight (kg)	Max weight (kg)
750	25	37.5
900	30	45
1200	40	60

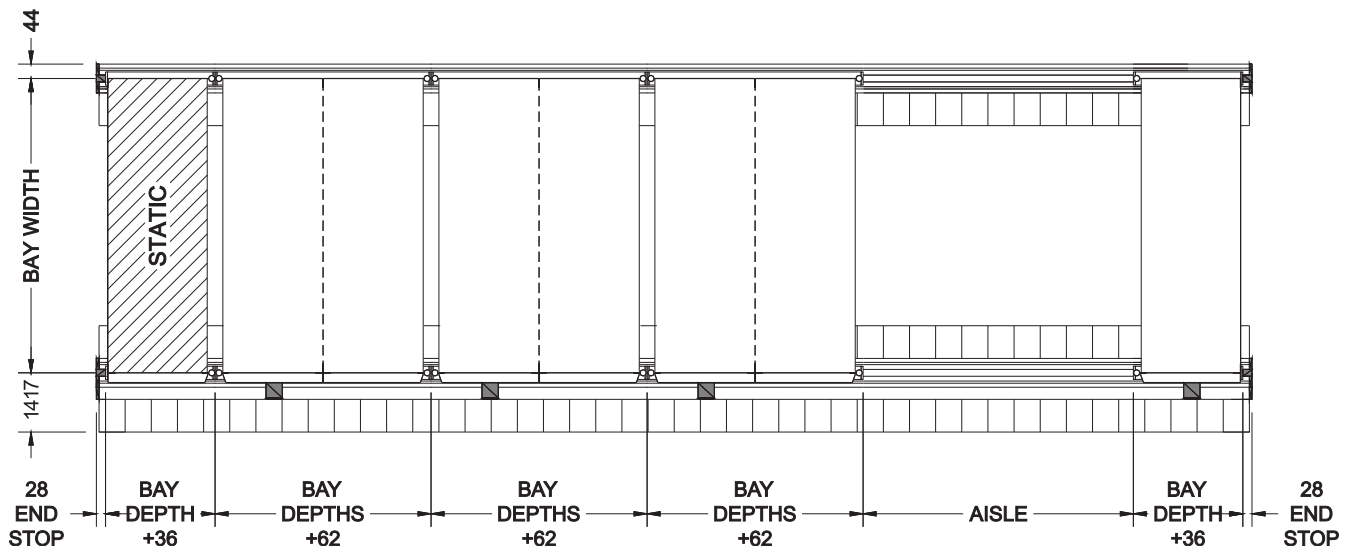
Overall dimensions

Unit depth

Mekdrive 2 Compactus® units have a Mekdrive track on the front and a standard track rear of the unit. Standard tracks add 44mm and Mekdrive tracks add 81mm to the nominal bay dimension. In installation, it is advised that the unit closest to a wall has a 50mm clearance away from the wall.

Unit length

Tracks are manufactured in standard 3m lengths and cut to suit the precise floor space that is available. Generally, an individual unit should not exceed 9,000mm in length.



Contact

For more information on the Mekdrive 2 Compactus®, please contact us on 1300 180 358.

Disclaimer:

The Information contained herein is the intellectual property of Dexion. The Information is defined to include: data, text, images, specification, graphics, design details and any and all other information whatsoever contained herein. The Information has been produced exclusively for Dexion and may not be used for any other purpose. None of the information may be used, altered, edited, copied, distributed or duplicated in any way without the express written consent of Dexion. Whilst the utmost care is taken to ensure the accuracy of the information contained herein, Dexion makes no guarantee as to its accuracy. Dexion shall, under no circumstances, be liable for any costs, losses, expenses or damages which may in any way be attributable to the use or adoption of such data and/or design details. All dimensions indicated are nominal only. Dexion reserves the right to alter or amend any of the information herein, including data and design details, without prior notice.

Accessories

- Shelf – slotted
- Shelf – plain
- Shelf stiffener
- Divider – binning
- Divider – slotted shelf
- Coat rail
- Bin fronts
- Roll out – file frame
- Roll out – media drawer
- Roll out – reference shelf
- Bins

Floor loads

Please contact your representative for information relating to point loads exerted by the wheels on the tracks.